



12B
IVORY



CREAM



11A
ALMOND



22B
WHEAT



OLD
COLONIAL



LIGHT
BEIGE



72A
TAUPE



41B
LIMESTONE

Jobsite Reminders for Best Color Uniformity

- Sample strips are not to be used for final color selection or approval. For final color approval, always build a sample panel in accordance with project specifications.
- Follow accepted, good masonry construction practices.
- Use a clean masonry sand meeting ASTM C144, which is consistent in color. Use sand from the same source throughout the project. Maintain the same mix proportions for each batch.
- Tool all joints when they reach the same degree of hardness.
- Protect all jobsite materials from weather by covering with water resistant materials.
- Never re-temper colored mortar. Additional water will affect final color.
- The use of admixtures is not recommended and may cause variations in the final color.
- Mix all materials 5 minutes in a mechanical mixer. Hand mixing will not fully develop the final color.

Variations in jobsite mix proportions, temperature, moisture, sand, tooling, and cleanup can cause inconsistencies in the color of the finished mortar.

Cleaning

Walls should be cleaned with a mild detergent or proprietary cleaner. Cleaning materials shall be in accordance with the manufacturer's recommendations. Test all cleaning materials on a sample panel before use. Do not clean colored mortar joints with acid as it will loosen pigments and expose sand grains. Sample panels require 7 to 21 days for complete hydration to occur depending on weather and site conditions. Do not clean panel for a minimum of 7 days after construction.

Sample Panel

The colors illustrated on this card are representative only and will vary depending on jobsite conditions.

While this card and color strips are useful in the preliminary phases of project planning, Lehigh does not recommend using this card and/or strips for final color approval. The best indication of final color is a jobsite sample panel constructed utilizing a qualified contractor and the actual jobsite materials, techniques, and conditions. Lehigh makes no warranty as to the color, appearance or consistency of the finished mortar. Lehigh Custom Color Cement is not designed for use as stucco.

75B
MOCHA



44C
CAYENNE



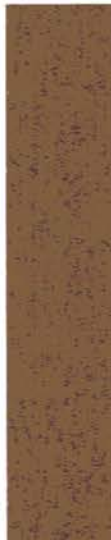
43G
SALMON



48B
RED CLAY



74H
NUTMEG



79E
EGGPLANT



81H
SLATE



88A
CHARCOAL

